

Helping businesses to

Grow and flourish

A technology
University offering
business solutions
supported by
world-leading facilities
and expertise in the
centre of Bradford





We can help your business address opportunities and challenges through

partnerships and projects

Gain access to leading-edge facilities and academic experts through our Faculties and Centres, who can help you design and re-design your product range, services and infrastructure to give you a competitive edge.

Our range of government funding schemes can cover some or all of your costs. We have established industry expertise in the areas of health, engineering, management and information technology and work with over 200 businesses each year.

This work is part of a continuing relationship with the University of Bradford's Centre for Skin Sciences to help Boots generate robust scientific support for the technology in our skin care products.

DR MIKE BELL, SCIENTIFIC
ADVISOR, BOOTS

Case Study

Our science experts investigated how active ingredients of No7's Lift and Luminate Day and Night Serum affected novel aspects of skin pigmentation helping provide Boots with further proof of their performance of its product.



Specialist facilities

Superior conference and meeting rooms

The University has fully catered conference facilities, meeting rooms and accommodation on both campuses (City Centre and Faculty of Management & Law) available for business hire.

We have flexible, collaborative office space for micro businesses at the heart of our City Campus and a range of bookable spaces for meetings and events.

World-class laboratories and research facilities

We have leading-edge health, life science, engineering and informatics research and teaching facilities of world-class standard for business to benefit from. These can be utilised through academic research activity and some can be booked for independent use.

Outstanding start-up facilities and business support

The Re:centre inspires and supports the design and redesign of products, services and infrastructure to deliver radical new business solutions. It offers coaching and mentoring, business units and hot desk facilities to current and ex-students and other business clients on a wide range of ventures and business activities.

The Re:centre is based in the Bright Building on City Campus, a building designed to provide maximum flexibility and adaptability and to create an environment to promote and inspire enterprise and entrepreneurship.

The Institute of Cancer Therapeutics is involved in cancer medicines development from concept to clinic. It houses a dedicated Business Bioscience Incubation Suite in the ICT Building on City Campus which offers office space, laboratory facilities and bioscience services.





A wealth of expertise on hand

The University's Business Partnerships Team coordinate the services we provide for business across the University and can help you pinpoint an expert or area who can meet your company's needs. The team will also advise you on what kind of intervention would fit best with the work you need doing.

Student and graduate talent

Our lecturers welcome businesses to work with to provide real world, small projects for students to solve as part of their module assessments with no cost to you. We also offer affordable student and graduate placement or internship options for short-term projects or can help you find a student or graduate to fill a vacancy in your company.

Knowledge Transfer Partnerships (KTP) programme cover some or all of the cost of a graduate placement to work on a research and innovation project for between 6 months and 3 years.

Academic experts

Industry research projects are regularly carried out by our academics and we can explore whether there are grants or government funds available to support the work.

Innovate UK (including KTPS) funding offers academic research expertise with an attractive government subsidy.

The Knowledge Transfer Partnership has been excellent, allowing us to apply expert skills to solve real world problems. The structure and support provided by the programme is a model for future projects.

DAVE THOMPSON,
TECHNICAL MANAGER,
NORGREN LEEDS.

Case Study

Norgren is a global engineering company offering engineering design solutions. The School of Engineering and Informatics worked with them to provide an understanding of the detailed mechanical, fluid and material principles of Norgren's existing Current to Pressure (I/P) converter leading to the design of a new generation of products.





A range of top quality

Qualifications and Training

The School of Management, one of Europe's leading business schools, offers leadership and management development programmes for corporate clients both in the UK and overseas. This includes in-company MBAs, a Postgraduate Certificate in Business Administration, as well as flexible short courses delivered on campus, in-company or online.

The Bradford MBA is currently ranked by the Financial Times (March 2015) as one of the world's Top 10 MBA programmes and No.1 in the world for MBA career development. Our Masters in Management courses also rank among the world's Top 60 programmes (Financial Times, September 2014).

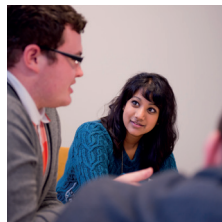
It enables us to gain people who we can mould into really good managers and for them, they can study and work at the same time and gain a recognised qualification.

JULIAN BAILEY
MORRISONS

Case Study

Tailor made courses to develop local talent

We developed a new business degree for Morrisons. The company have funded student places on the degree which is helping them recruit new company managers.



M
MORRISONS

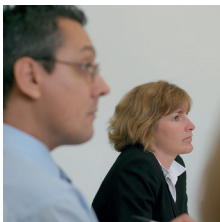


Knowledge Transfer Networks

The Knowledge Transfer Networks offer a wide range of business and personal development services from executive education, coaching and consultancy breaking down the barriers to business and personal growth. The networks have a 10 year track record of working with business across a wide range of sectors and services.

“Working with the Knowledge Transfer Networks has helped us to ask the right questions of ourselves and the organisation and provided a great learning platform to create the future.”

GARY DALE
OPERATIONS DIRECTOR
LOGIC FIRE AND SECURITY LTD.



re:centre

Our new £6m outstanding BREEAM rated Bright Building on the City Campus, purpose built as the University's new front door for business with meeting and seminar space and flexible and collaborative office space for SMEs.

Our resident Business Partnerships Team is on-hand to help identify how the University can support you.



Project Part-Financed
by the European Union
European Regional
Development Fund





UNIVERSITY of
BRADFORD

*Further
information*



Call



01274 236000

or email the Business Partnerships Team
to find out how we can help.



rkts@bradford.ac.uk



bradford.ac.uk/business



[@bradfordimpact](https://twitter.com/bradfordimpact)



facebook.com/university.bradford